

Good afternoon **dvoracek**.

You currently have **87 (0 new)** private messages.

f295: Exploring 21st Century Photography > Studio & Darkroom > Lensless Camera: Making and Modifying > **Panoramic Populist**

SAVE THE NET

Users Browsing Forum

PayPal Donate

dvoracek, AdSense, MSN Bot, Yahoo! Bot and 2 Guests

PayPal Payment Plan

Pages: 1

[reply](#) [notify](#) [recommend](#) [print](#)

Author Panoramic Populist (currently 585 views)

[quote](#) [delete](#) [modify](#) [report](#)

dvoracek **Posted:** June 29th, 2008, 2:02pm

f295 Master My curiosity piqued by PinApples Domino panoramic camera (<http://www.f295.org/Pinholeforum/forum/Blah.pl?b-cm/m-1214678688/>), I put together a version of the **Populist** with the same film format.

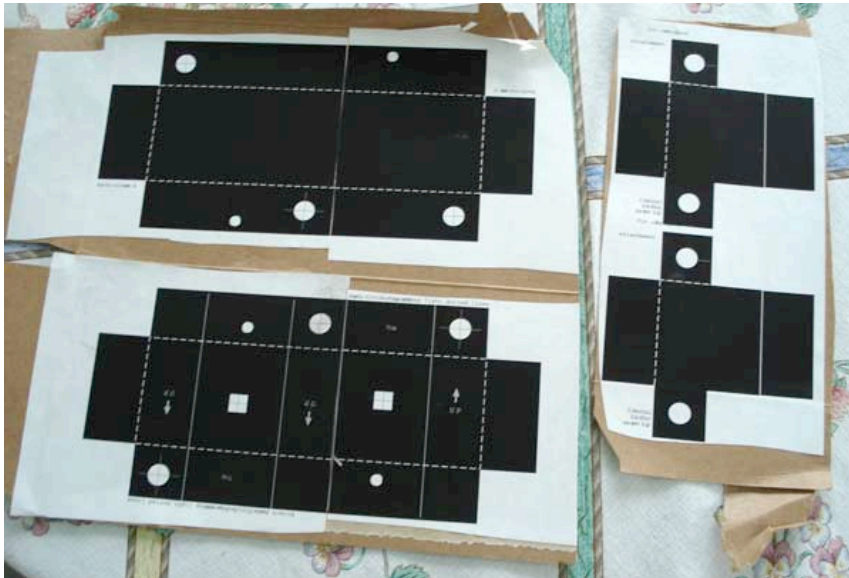


Photon path

I took two patterns, cut one off at the film bay and one off at the end of the camera and glued them together on the card stock. So the image width should be 36mm + 36 mm + 24mm = 96mm.

limiting imager

Attachment: pattern_5957.jpg
596 downloads - Size: 26.49 KB



Posts: 1,006
Posts Per Day: 0.65

Ads by Google

Pinholes for Large Format

Laser Drilled Pinhole Lenses Designed for Large Format Cameras
www.pinholephotos.com

Pinhole Detector

On-Line Opaque Material Pinhole Inspection System
www.alumivision.com

<http://idea.uwosh.edu/nick/pinholephoto.htm>

Logged Online [site](#) [pm](#)

dvoracek **Posted:** June 29th, 2008, 2:04pm

[quote](#) [delete](#) [modify](#) [report](#)

f295 Master If that internal assembly on the right looks a little different, I had experimented with making the film bays out of individual little boxes, and for this ultrawide format it seemed to have an advantage over extending the internal assembly to a wider format.

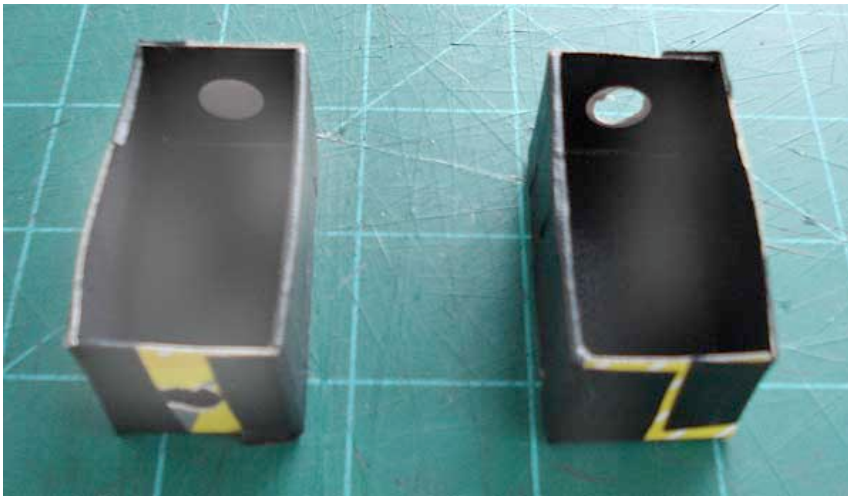


Photon path

Attachment: filmbays_8289.jpg
594 downloads - Size: 16.45 KB

limiting imager

Posts: 1,006
Posts Per Day:
0.65



<http://idea.uwosh.edu/nick/pinholephoto.htm>

Logged Online  


Reply: 1 - 13

dvoracek Posted: June 29th, 2008, 2:04pm

f295 Master Otherwise, it's just a very wide Populist. I fit it out with a .20mm Gilder EMS hole.



 Attachment: interior_7356.jpg
590 downloads - Size: 16.89 KB

Photon path
limiting imager



Posts: 1,006
Posts Per Day:
0.65

<http://idea.uwosh.edu/nick/pinholephoto.htm>

Logged Online  


Reply: 2 - 13

dvoracek Posted: June 29th, 2008, 2:05pm

f295 Master Each frame 21 clicks or about 2 1/2 turns of the winder.



 Attachment: loaded_5667.jpg
591 downloads - Size: 18.02 KB

Photon path
limiting imager

Posts: 1,006
Posts Per Day:
0.65



<http://idea.uwosh.edu/nick/pinholephoto.htm>

Logged Online

Reply: 3 - 13

dvoracek Posted: June 29th, 2008, 2:08pm

f295 Master Now to go get some film and give it a whirl. I'm trying to think of some scenes with a dark center and bright edges. This thing is at least two stops different from center to edge.



Photon path
limiting imager

Attachment: panopopulist_1479.jpg
592 downloads - Size: 22.82 KB

Posts: 1,006
Posts Per Day:
0.65



<http://idea.uwosh.edu/nick/pinholephoto.htm>

Logged Online

Reply: 4 - 13

PinApple Posted: June 29th, 2008, 2:12pm

f295 Apprentice Very nice, and at least you don't end up making a couple of dozen dominoes homeless 😊
I look forward to seeing the results.

Posts: 12
Posts Per Day:
0.10

Logged Offline

Reply: 5 - 13

DaCh Posted: June 30th, 2008, 5:54pm

f295 Novice Another great camera, looking forward to seeing how you use it.
Now see what you have started PinApple!
Soon we will all have to get "wide screen" monitors to look at the posts here.
Some of you may remember that last year I did make a rash promise to produce a 10:1 format camera.....well I have not forgotten and it is mostly finished, made of plastic and using 35mm film on a curved film plane.
I will try and get it finished some time soon.





Cheers
David

Posts: 354
Posts Per Day:
0.80

There is light at the end of the tunnel but it is very dim because the hole is so small.

Logged Offline

Reply: 6 - 13

GregL Posted: July 1st, 2008, 8:46am



f295 Master Another great camera in the Populist line!!



Posts: 553
Posts Per Day:
0.37

Logged Offline

Reply: 7 - 13

dvoracek Posted: July 1st, 2008, 9:45am



f295 Master Here are some pictures. It looks like once again, I underestimated the light transmission qualities of the card stock (cereal boxes seem OK, but these Canfield Sparkling water cases seem to have a problem) and got some low level red fogging which isn't noticable in a normally exposed image (like the center of these images), but really dominates in a low exposure situation, like the outside edges. This really freaks my scanner out and makes it pretty nearly impossible to get anything approaching normal color.



Photon path
limiting imager

Some examples.

Attachment: dininglivingroom_5423.jpg
466 downloads - Size: 17.77 KB



Attachment: benchandhostas_3474.jpg
464 downloads - Size: 19.28 KB



Attachment: spencer_7348.jpg
465 downloads - Size: 16.42 KB

Posts: 1,006
Posts Per Day:
0.65



<http://idea.uwosh.edu/nick/pinholephoto.htm>

Logged Online  

Reply: 8 - 13

dvoracek Posted: July 1st, 2008, 9:47am


   

f295 Master Here's a few that were taken quickly enough together so that red fogging didn't have such an impact. I guess, I'll cover the thing with 3M 235, and try again.



Nick

Photon path
limiting imager

 Attachment: porch_8832.jpg
464 downloads - Size: 19.61 KB



 Attachment: lookingcrabbyagain_7337.jpg
466 downloads - Size: 18.84 KB



<http://idea.uwosh.edu/nick/pinholephoto.htm>

Logged Online  

Reply: 9 - 13

press_cwb Posted: July 1st, 2008, 6:38pm

f295 Novice

Quoted from dvoracek



Here are some pictures. It looks like once again, I underestimated the light transmission qualities of the card stock (cereal boxes seem OK, but these Canfield Sparkling water cases seem to have a problem) and got some low level red fogging which isn't noticable in a normally exposed image (like the center of these images), but really dominates in a low exposure situation, like the outside edges. This really freaks my scanner out and makes it pretty nearly impossible to get anything approaching normal color.

Posts: 355
Posts Per Day:
0.54

Some examples.

Nick, great work, once more. on the light transmission of the cardstock, yeah, i feel your pain. i had similar issues with my wooden Pano (Balsa wood, darkened by china ink is really NOT light tight :/).

As a suggestion, I'd say you can get - though that would take away from the "build it from stuff around the house" motif - black heavystock paper (i don't know how you call it outside brasil, but over here it's a line of colored papers called ColorPlus that comes in weights up to 220 g/m2. that 220 is what i've used on my latest paper camera project (which is a mesh between a **populist**, a simpleCam and some ideas i had tossing around my head, soon to be disclosed to the public), and it's taking the every day beating quite well, without leaks of any sort. perhaps it's a viable alternative, since a single sheet us more than enough for a regular **populist**, and i think an A3 sized sheet might cut it to the pano.


cheers
luciano de sampaio

BIGHUGELABS.COM



photos 623 explore 1 contacts 147 sets 39

luciano_sampaio

Logged Offline 

Reply: 10 - 13

steveydphoto Posted: July 2nd, 2008, 8:12am

f295 Journeyman Great camera. I have never built my own pinhole camera and am going to try to build the normal populist first.



Posts: 97
Posts Per Day:
0.80

Logged Online 

Reply: 11 - 13

Longbow3 Posted: July 2nd, 2008, 5:13pm

f295 Grand Master I've used black poster board to make populist's. It seems to work and folds so much easier than the cereal box. I cover the poster board with clear tape to make it a little sturdier and water resistant.



Please, just twelve significant photographs.

Posts: 2,292
Posts Per Day:
2.25

Logged Online 

Reply: 12 - 13

dvoracek Posted: July 7th, 2008, 3:43pm

f295 Master Yes, I've used black poster board for the Populist and I would recommend it, but as long as you've got the tape, it doesn't take that much to completely cover the thing.



Here's a self portrait (the camera's, although I am in the picture) in the mirror in it's new Goth outfit, now quite reliably light tight. More results at <http://www.f295.org/Pinholeforum/forum/Blah.pl?b-CP/m-1215462661/>

Photon path
limiting imager

Posts: 1,006
Posts Per Day:
 Attachment: selfportrait_8806.jpg
298 downloads - Size: 20.80 KB



<http://idea.uwosh.edu/nick/pinholephoto.htm>

Logged Online  

Reply: 13 - 13

 Pages: 1

Board Index › Lensless Camera: Making and Modifying [previous | next]

Switch to:

Lensless Camera: Making and Modifying

 Quick Reply

Forum Rules

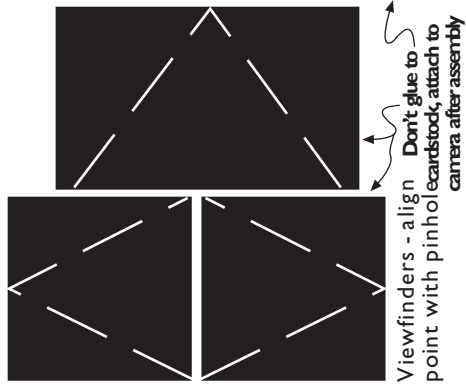
You **may** post new threads
You **may** post replies
You **may** post polls
You **may** post attachments

HTML is **off**
Blah Code is **on**
Smilies are **on**

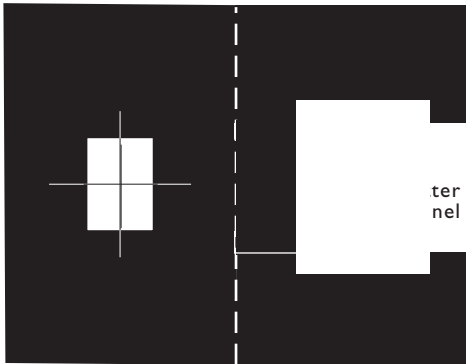
24mm
 .20mm pinhole
 ISO 200

Bright Sun
 Cloudy Bright
 Cloudy/open shade
 Heavy Overcast
 Bright Interiors
 Interiors

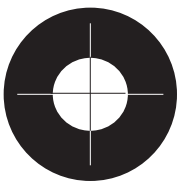
Exposure
 w/reciprocity 1/4s 1/2s 1.5s 4s 1.5m 3.5m
 correction



Shutter Assembly



Winder collar,



Cut out for tripod

